



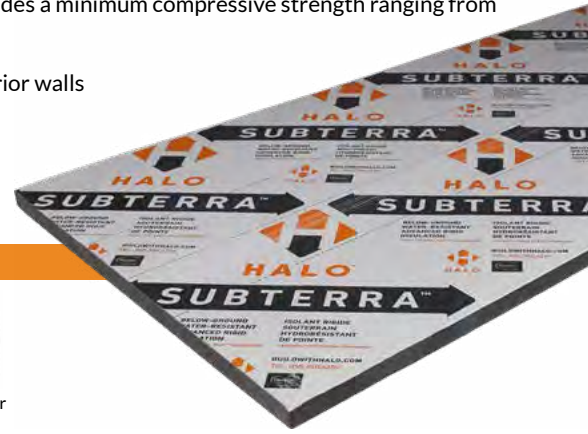
Graphite Polystyrene (GPS) Rigid Foam Insulation

Halo® Subterra® is designed to insulate below-grade walls and under slab in residential, commercial, and industrial buildings. The product is manufactured from denser rigid Neopor® Plus breads (graphite polystyrene - GPS), which provides a minimum compressive strength ranging from 16 to 40 PSI (110 to 275 kPa).

Halo® Subterra® is coated with polypropylene laminates on both sides of the insulation. The laminates are white on one side, and white or clear on the other side. The denser Neopor® Plus and polypropylene laminate makes Subterra® strong and durable against heaving loading and wet environments, such as backfill and construction traffic. In addition, Halo® Subterra® acts as a vapor barrier, while providing continuous insulation.

BASIC USE

- Below-grade exterior walls
- Under-slab



Product Features

Stable long term thermal resistance (LTTR) R5 nominal

Environmentally responsible

Flexible

Durable

Vapor barrier

Environmental & Sustainability

- Produced without the use of chlorofluorocarbon (CFCs), hydrochlorofluorocarbon (HCFCs) or formaldehyde. As a result, Halo® Subterra® will not produce harmful emissions to the environment.
- BASF Neopor® 5300 Plus is recognized as a product that produces low chemical emissions by the Greenguard Environment Institute. Neopor® 5300 Plus is Greenguard Indoor Air Quality Certified® and Greenguard Children & Schools SM Certified product.
- Neopor® 5300 is compliant with the Living Building Challenge Red List materials as well it has achieved a Health Product Declaration further indicating its safety to maintain a healthy environment for occupants.



Physical Properties

			Subterra® 16 ^c Type II (Type 2)	Subterra® 20 ^c Type XIII (Type 3)	Subterra® 25 ^c Type IX (Type 3)	Subterra® 30 ^c Type IX (Type 3)	Subterra® 40 ^c Type XIV (Type 3)
			COMPLIANCE				
			ASTM C578 ^b (CAN/ULC S701 ^b)				
THERMAL RESISTANCE^a	75°F (24°C)	ASTM C518 CAN/ULC S701	R-5 (0.88 RSI)				
	40°F (4.4°C)		R-5.2 (RSI 0.92)	R-5.3 (RSI 0.93)			
PHYSICAL	Compressive Resistance at 10% def., Min.	ASTM D1621	16 psi (110 kPa)	20 psi (140 kPa)	25 psi (172 kPa)	30 psi (210 kPa)	40 psi (276 kPa)
	Flexural Resistance Min.	ASTM C203	35 psi (240 kPa)	45 psi (300 kPa)	50 psi (300 kPa)	50 psi (300 kPa)	60 psi (300 kPa)
	Dimensional Stability Max.	ASTM D2126	2%				
MOISTURE	Water Vapor Permeance Max.	ASTM E96	0.08 perms (4.4 ng/Pa-s-m ²) ^d				
	Water Absorption Max.	ASTM C272	1.1%				
FIRE	Flame Spread Index, Max.	ASTM E84 CAN/ULC S102.2	≤25 (<230)				
	Smoke Developed Index, Max.		≤450 (>500)				
	Thickness	4" (102mm)					
	Density, Max.	2.2 pcf (35 kg/m ³)					
	Oxygen Index, Min.	ASTM D2863	24%				

- At 1" nominal thickness (actual thickness = 1.06" (26.92mm))
- Unless noted otherwise, properties are based on 1" (25.4mm) thickness without laminate. Data provided by BASF
- Contact your local manufacturer to confirm availability.
- Based on independent testing conducted by QAI with laminate and 1" thick GPS

Technical Information

- Halo® products should be protected from reflective or direct UV exposure. Always keep stored Halo® products tarped or covered to protect from weather, and when possible store indoors. Do not use a clear plastic covering film.
- Until Halo® Subterra® is covered the following recommendations will help ensure installed products maintain manufactured dimensions.
- Remove or cover the surface that is casting a reflection on installed Halo® products, or shield the affected Halo® products.
- Cover Halo® Subterra® if left exposed for more than 30 days. Faded printing on Halo® laminates is normal and will not degrade the products properties.
- Ensure all butt joints are tightly fitted and apply sheathing tape or liquid sealant as soon as possible.
- Immediately tape seal or temporarily cover all joints of inside corners until tape sealant is applied.
- Prior to use of adhesives, sealants or other similar products with GPS insulation please verify the compatibility with adhesive manufacturers.
- Halo® Subterra® products are made of combustible materials and may need to be protected from high heat sources. In addition, a thermal barrier may be required when used on the interior of a building. Refer to the local building code for appropriate protection and thermal barrier requirements.

Sizes

Halo® Subterra® sheathing are available in 4' x 8' (1220mm x 2440mm) sheets, 5/8" (16mm), 1" (25.4mm), 1.5" (38.1mm), and 2" (50.8mm) thick. Custom sizes are available. Contact your local Halo representative for more information.

Packaging

Halo® packaging and bundle sizes vary. Please contact your local Halo® manufacturer or dealer to confirm your local packaging specifications and available bundle sizes.

Manufacturers

- AMC Foam Technologies Inc.
35 Headingley St.
Headingley Manitoba, R4H 0A8
877-789-7622
- Perma R Products Inc.
106 Perma R Rd.
Johnson City, TN, 37604
800-647-6130
- Form Systems, Inc.
330 Cain Drive
Haysville, Kansas 67060
1-888.838.5038
- Progressive Foam Technologies
1 Southern Gateway Dr.
Gnadenhutten, OH, 44629
800-860-3626
- Perma R Products Inc.
2604 Sunset Dr.
Grenada, MS, 38901
800-647-6130

Applicable Standards

ASTM C578	Standard Specification for Rigid, Cellular Polystyrene Thermal Insulation.
ASTM C518	Standard Test Method for Steady-state Thermal Transmission Properties by Means of the Heat Flow Meter Apparatus.
ASTM D1621	Standard Test Method for Compressive Properties of Rigid Cellular Plastics.
ASTM D2842	Standard Test Method for Water Absorption of Rigid Cellular Plastics.
ASTM E84	Standard Test Method for Surface Burning Characteristics of Building Materials.
ASTM E96	Standard Test Methods for Water Vapor Transmission of Materials.
ASTM C203	Standard Test Methods for Breaking Load and Flexural Properties of Block-Type Thermal Insulation.
ASTM D2863	Standard Test Method for Measuring the Minimum Oxygen Concentration to Support Candle-Like Combustion of Plastics (Oxygen Index).
CAN/ULC-S701	Standard for Thermal Insulation, Polystyrene, Boards and Pipe Covering.
CAN/ULC S102.2	Surface Burning Characteristics of Flooring, Floor Covering and Miscellaneous Materials and Assemblies.
ASTM C272	Standard Test Method for Water Absorption of Core Materials for Sandwich Constructions

Limited Warranty

Subject to the terms and conditions contained in the Limited Warranty, the Manufacturer (as defined herein) warrants that if the representative thermal insulation value of the Neopor® bead in the Halo® insulation product Halo® Interra®, Halo® Exterra®, or Halo® Subterra® (the "Product" or "Products") varies from the published thermal resistance, the Manufacturer will, when a claim under the attached Limited Warranty is made within fifteen (15) years from the date of manufacture, refund the original purchase price to the first owner of a structure in which the Product has been installed (the "Owner"). For the purposes of the Limited Warranty, the original purchase price of the Product shall be exclusive of taxes and all other costs, including builder mark ups, labor costs and costs to remove the original Product and replace it with new Product.

For more information refer to the [Halo Zero Thermal Drift Guarantee](#).

Disclaimer of Liability

References to "Logix Brands" or the "Company" mean the manufacturer selling the Products to Owner (the "Manufacturer") unless otherwise expressly noted. NO EXPRESS WARRANTIES ARE GIVEN EXCEPT FOR THE ATTACHED LIMITED WARRANTY. ALL OTHER WARRANTIES, EXPRESS, STATUTORY AND IMPLIED, INCLUDING BUT NOT LIMITED TO, WARRANTIES OF MERCHANTABILITY AND FITNESS FOR A PARTICULAR PURPOSE, ARE EXPRESSLY DISCLAIMED. The Owner assumes all risks as to the use of the material. As the Manufacturer has no control over installation design and workmanship, accessory materials or application conditions, the Manufacturer does not warranty the performance or results of any installation containing the Products. The Products must be handled and installed according to the instructions outlined in the applicable Product installation guide and used only for the particular purposes recommended in the Halo Product literature available on [BuildWithHalo.com](#).

Technical Support

For North American technical inquiries please contact Francis Roma (froma@logixbrands.com) or Tyler Simpson (tsimpson@logixbrands.com).

Code Evaluation Approvals

- CCMC 14004-L
- QAI Listing B1031-2
- QAI B1055-2

